

Play value

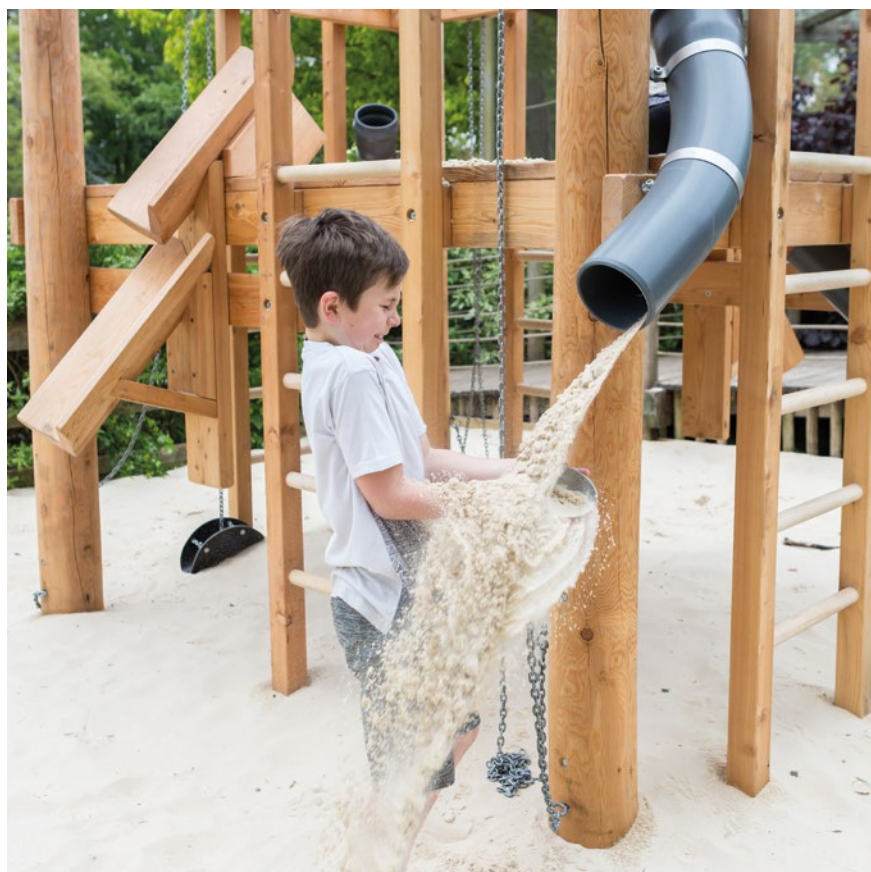
The Building Site is one of our “work” play offers and provides children with the opportunity to realistically mimic the working world of adults. Heavy loads can be moved using rollers, sand or gravel can be tipped into channels and tubes, a bucket wheel turns around and, depending on the model, a tipper tray also fills up. Carrying out a joint undertaking fosters creative cooperation. The structure should be installed in a bed of sand or gravel. This will allow the element of earth to be ideally incorporated into the play activity.

Fundamental characteristics

- Child-oriented dimensions according to ergonomic knowledge
- Naturally shaped de-barked posts
- Appealing to the senses with its space-defining design
- High-quality design
- Numerous play offers
- Sturdy tongue and groove floor allows for large play space below the platform
- High play value with low space requirement
- Can be combined with other equipment
- Incentive for playing: sand hoists, sand wheel, chains
- Movement: physical exertion, climbing



Special version



Order No. L5.01000 Building Site larch version, Photo © Barbara Evripidou



Photo © Barbara Evripidou

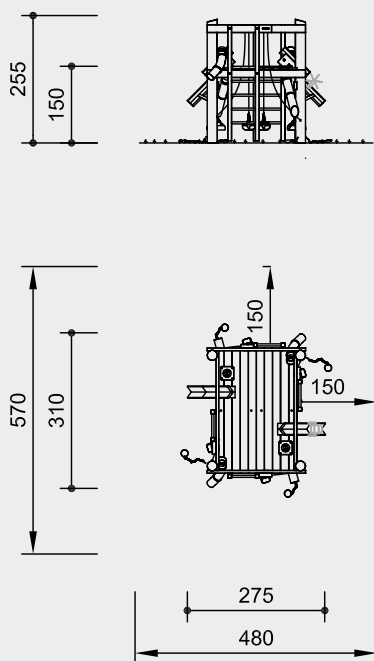
Building Site 01

Recommended for

- Kindergarten children
- School children
- Supervised play areas such as kindergartens, schools, after-school programmes or similar
- Public play areas without supervision, such as playgrounds, parks or similar



5.01000

Order No. 5.01000
Building Site 01


Scale 1:150

Safety check according to DIN EN 1176

Components

- 1 Platform
- 4 Ladders
- 4 Sand hoists with 4 shovels
- 4 Sand pipes
- 2 Sand chutes, 2 levels, 1 sand wheel

Installation information

Surfacing requirements corresponding to a fall height of ≤ 1.50 m (please refer to price list for more detailed information)
 Sand is required for correct functioning.

Foundations
 4 items 60 x 60 x 60 cm
 Excavation depth 80 cm

Attention:
For all installation dimensions refer to current installation instructions.
 Technical changes reserved.
Equipment also available with steel feet or made of larch with steel feet.

Technical information

Equipment made of spruce / fir, larch, ash

Peeled white

Palisades peeled white means that bark, cambium and sapwood are removed, the natural shape of the trunk is preserved and can be experienced


Bevel cut

Vertical stand posts with bevelled end grain section as constructive wood preservation measure


Perforated

The earth / air zone of the wood is perforated by numerous small bore holes to ensure that the impregnating agent penetrates this particularly endangered zone


Core-free

Sawn-timbers core-free, thus decreasing occurrences of cracking and undesired changes in shape


Tongue and groove

Tongue and groove planks made of 4 cm solid wood, highly resilient, no trickling of dust / sand, protection against direct rain


Hardwood rungs

Climbing rungs made of hardwood (ash) Ø 4.2 cm, milled and mortised, secured against twisting, easy to grip and not cold for children to touch


Chains

Chains made of hot-dip galvanized steel (1.4301 / 1.4571 at extra charge) welded before galvanising, short-linked, without eyelets on the connecting parts, easy to exchange and shorten



For more detailed explanation of the quality characteristics see price list.

Sand pipes made of plastic, wall thickness approx. 7 mm

Sand container made of textile-reinforced rubber belt, 8 mm thick

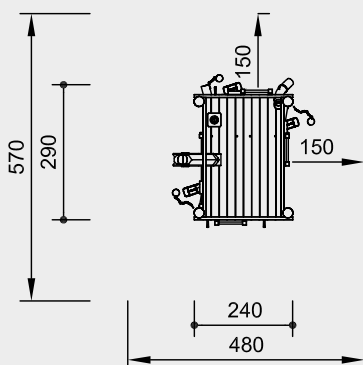
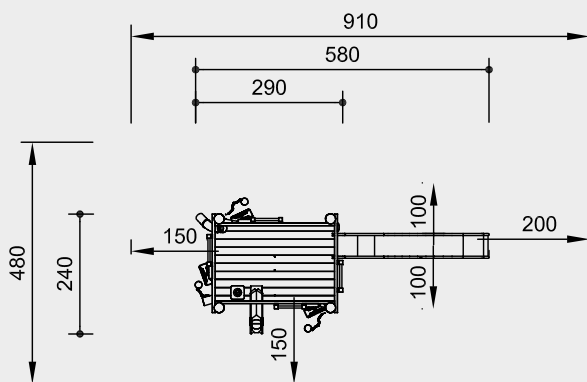
Sand wheel hot-dip galvanised

Dimensions

(small deviations possible)

Height	2.55 m
Platform height	1.50 m
Platform floor	1.60 x 2.50 m
Length	3.10 m
Width	2.75 m
Weight	700 kg


5.01000

Order No. 5.01100 Building Site 011

Order No. 5.01400 Building Site 014


Scale 1:150

Safety check according to DIN EN 1176

Components
Order No. 5.01100 Building Site 011

- 1 Platform
- 3 Ladders
- 3 Sand hoists with 3 shovels
- 2 Sand pipes
- 1 Sand chute, 2 levels, 1 sand wheel
- 3 Walls
- 2 Benches
- 1 Table

Order No. 5.01500 Building Site 015

- as above, but additionally
- 1 Stainless steel slide with ground anchor

Order No. 3.63020

Order No. 5.01400 Building Site 014

- 1 Platform
- 4 Ladders
- 3 Sand hoists with 3 shovels
- 2 Sand pipes
- 1 Sand chute, 2 levels, 1 sand wheel
- 1 Stainless steel slide with ground anchor

Order No. 3.63020

Installation information

Surfacing requirements corresponding to a fall height of ≤ 1.50 m (please refer to price list for more detailed information)
Sand is required for correct functioning.

Foundations
Building Site

- 4 items 60 x 60 x 60 cm
- Excavation depth 80 cm

Slide

- Excavation depth for ground anchor 55 cm

Attention:

For all installation dimensions refer to current installation instructions.
Technical changes reserved.
Equipment also available with steel feet or made of larch with steel feet.

Dimensions

Height	2.55 m
Platform height	1.50 m
Platform floor	1.60 x 2.50 m
Length	2.90 m
With slide	5.80 m
Width	2.40 m
Weight	
Best.-Nr. 5.01100	800 kg
Best.-Nr. 5.01400	700 kg
Best.-Nr. 5.01500	850 kg

Technical information

Equipment made of spruce / fir, larch, ash

Peeled white

Palisades peeled white means that bark, cambium and sapwood are removed, the natural shape of the trunk is preserved and can be experienced

Bevel cut

Vertical stand posts with bevelled end grain section as constructive wood preservation measure

Perforated

The earth / air zone of the wood is perforated by numerous small bore holes to ensure that the impregnating agent penetrates this particularly endangered zone

Core-free

Sawn-timbers core-free, thus decreasing occurrences of cracking and undesired changes in shape

Claddings

Claddings made of mountain larch (4 – 5 cm) or spruce / fir (3 – 5 cm). Peeled white by hand, natural tree surface remains tangible and perceptible

Tongue and groove

Tongue and groove planks made of 4 cm solid wood, highly resilient, no trickling of dust / sand, protection against direct rain

Hardwood rungs

Climbing rungs made of hardwood (ash) Ø 4.2 cm, milled and mortised, secured against twisting, easy to grip and not cold for children to touch

Chains

Chains made of hot-dip galvanized steel (1.4301 / 1.4571 at extra charge) welded before galvanising, short-linked, without eyelets on the connecting parts, easy to exchange and shorten

Order No. 5.01400 / 5.01500

as above, but additionally

One-piece construction

Total construction of the slide made of 2 mm stainless steel, drawn in box form, surface glass bead blasted, without welding seam between sliding surface and side cheek

For more detailed explanation of the quality characteristics see price list.

Sand pipes made of plastic, wall thickness approx. 7 mm

Sand container made of textile-reinforced rubber belt, 8 mm thick

Sand wheel hot-dip galvanized

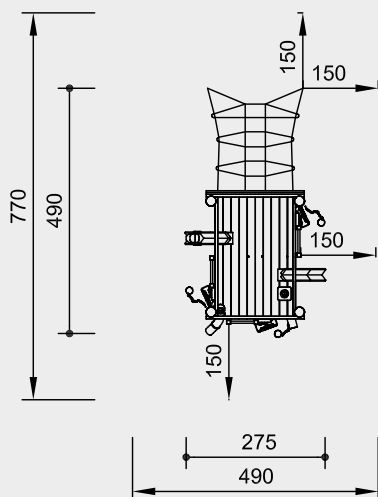
5.01100

5.01400

5.01500

09/20

© Richter Spielgeräte GmbH

Order No. 5.02000
Building Site 02


Scale 1:150

Safety check according to DIN EN 1176

Components

- 1 Platform
 - 3 Ladders
 - 3 Sand hoists with 3 shovels
 - 2 Sand pipes
 - 2 Sand chutes, 2 levels, 1 sand wheel
 - 1 Inclined climbing net
- Order No. 3.69160

Installation information

Surfacing requirements corresponding to a fall height of ≤ 1.50 m (please refer to price list for more detailed information)
 Sand is required for correct functioning.

Foundations
Building Site

4 items 60 x 60 x 60 cm
 Excavation depth 80 cm

Inclined Climbing Net

2 items 50 x 50 x 40 cm
 Excavation depth 80 cm

Attention:

For all installation dimensions refer to current installation instructions.

Technical changes reserved.

Equipment also available with steel feet or made of larch with steel feet.

Dimensions

(small deviations possible)

Height	2.55 m
Platform height	1.50 m
Platform floor	1.60 x 2.50 m
Length	4.90 m
Width	2.75 m
Weight	700 kg

Technical information

Equipment made of spruce / fir, larch, ash

Peeled white

Palisades peeled white means that bark, cambium and sapwood are removed, the natural shape of the trunk is preserved and can be experienced


Bevel cut

Vertical stand posts with bevelled end grain section as constructive wood preservation measure


Perforated

The earth / air zone of the wood is perforated by numerous small bore holes to ensure that the impregnating agent penetrates this particularly endangered zone


Core-free

Sawn-timbers core-free, thus decreasing occurrences of cracking and undesired changes in shape


Tongue and groove

Tongue and groove planks made of 4 cm solid wood, highly resilient, no trickling of dust / sand, protection against direct rain


Hardwood rungs

Climbing rungs made of hardwood (ash) Ø 4.2 cm, milled and mortised, secured against twisting, easy to grip and not cold for children to touch


Richter Hercules type rope

Richter Hercules type rope, a combination of galvanised six-strand steel cables and polyester yarn, diameter > 20 mm, laid and glued with very good abrasion resistance, strong sheathing even in the case of damage by puncturing


Aluminium rope pressing

Aluminium rope pressing, cylindrically pressed, with rounded ends


S-connectors

S-connectors Ø 8.1 mm, made of high-quality stainless steel, rounded


Rope connection fixed

Fixed rope connection without dangerous openings. Screw connection adjustable and countersunk in the wood


Chains

Chains made of hot-dip galvanized steel (1.4301 / 1.4571 at extra charge) welded before galvanising, short-linked, without eyelets on the connecting parts, easy to exchange and shorten



For more detailed explanation of the quality characteristics see price list.

Sand pipes made of plastic, wall thickness approx. 7 mm

Sand container made of textile-reinforced rubber belt, 8 mm thick

Sand wheel hot-dip galvanised



5.02000

Play value

Our Building Site Combination offers numerous opportunities for creative play and exercise. The platform can be reached via a climbing net and ladder, while the slide offers a swift getaway. The diverse "work" equipment, hut and the play area under the platform invite children to hide away and engage in different kinds of role-playing games. Working together on the building site is equally enjoyable for both big and small children.



Photo © Barbara Evripidou



Order No. L5.03000 Building Site Combination 03 larch version

Building Site Combination 03

Fundamental characteristics

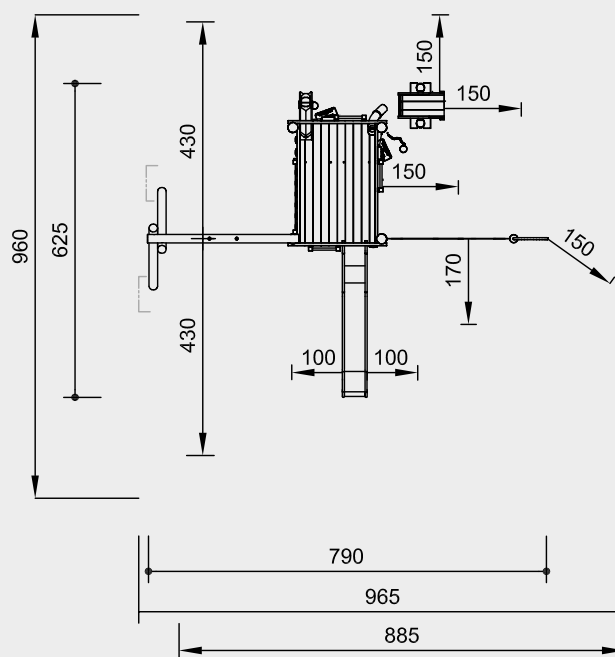
- Child-oriented dimensions according to ergonomic knowledge
- Space-defining design and natural wooden surface appeal to the senses
- Offers a range of play opportunities
- Large play area underneath the platform
- Incentive for playing: sand hoists, sand wheel, chains, climbing net, swing, slide
- Movement: physical effort, climbing, swinging, sliding

Recommended for

- Kindergarten children
- School children
- Supervised play areas such as kindergartens, schools, after-school programmes or similar
- Public play areas without supervision, such as playgrounds, parks or similar



5.03000

Order No. 5.03000
Building Site Combination 03


Scale 1:150

Safety check according to DIN EN 1176

Components

- 1 Platform
- 3 Walls
- 2 Benches
- 1 Table
- 3 Ladders
- 2 Sand hoists with 2 shovels
- 1 Bent sand pipe
- 1 Sand chute, 2 levels, 1 sand wheel
- 1 Balustrade at the side of the swing
- 1 Single swing with swing suspension
- 1 Vertical climbing net with firemen's pole Order No. 3.69350
- 1 Stainless steel slide with ground anchor Order No. 3.63020
- 1 Sand tipper Order No. 5.01200

Dimensions

Height	3.00 m
Platform height	1.50 m
Platform floor	1.60 x 2.50 m
Length	6.25 m
Width	7.90 m
Vertical net	1.75 x 2.50 m
Weight	1200 kg

Installation information

Surfacing requirements depend on overall construction corresponding to a fall height of ≤ 2.00 m (please refer to price list for more detailed information)

Sand is required for correct functioning.

Foundations

Building Site

4 items 60 x 60 x 60 cm

Excavation depth 80 cm

Stainless Steel Slide

Excavation depth for ground anchor 55 cm

Vertical Climbing Net

1 item 60 x 60 x 60 cm

Excavation depth 80 cm

Firemen's Pole

1 item 40 x 40 x 30 cm

Excavation depth 50 cm

Single Swing

2 items 60 x 70 x 60 cm

Excavation depth 80 cm

Sand Tipper

1 item 135 x 60 x 50 cm

Excavation depth 70 cm

Attention:

For all installation dimensions refer to current installation instructions.

Technical changes reserved.

Equipment also available with steel feet or made of larch with steel feet.

Technical information

Equipment made of spruce / fir, larch, ash

Building Site

refer to Order No. 5.01000

Claddings

Claddings made of mountain larch (4 – 5 cm) or spruce / fir (3 – 5 cm). Peeled white by hand, natural tree surface remains tangible and perceptible

One-piece construction

Total construction of the slide made of 2 mm stainless steel, drawn in box form, surface glass bead blasted, without welding seam between sliding surface and side cheek

Swing seat

Ergonomically shaped swing seat made of rubber with soft shock absorbing edge. Durable due to strong profiled steel insert

Richter Hercules type rope

Richter Hercules type rope, a combination of galvanised six-strand steel cables and polyester yarn, diameter > 20 mm, laid and glued with very good abrasion resistance, strong sheathing even in the case of damage by puncturing

Aluminium rope pressing

Aluminium rope pressing, cylindrically pressed, with rounded ends

S-connectors

S-connectors Ø 8.1 mm, made of high-quality stainless steel, rounded

Swing joint

Drop-forged, hot-dip galvanised swing joint with sintered bush and integrated swivel

Rope connection fixed

Fixed rope connection without dangerous openings. Screw connection adjustable and countersunk in the wood

Adjustable

Adjustable two-piece bolt connection, easy to maintain, no projecting threads

Interlocking

Interlocking connection, with milled metal rings or serrated disc dowels, to reinforce the bolt connection under high loads transverse to the grain direction of the wood

Sintered bush

For all reciprocating movements we use sintered plain bearings which are self-lubricating in use and can easily be exchanged if necessary

For more detailed explanation of the quality characteristics see price list.

Firemen's Pole Ø 42 mm made of stainless steel, glass bead blasted

5.03000

Play value

Our Building Site Combination invites young and old to imaginative role plays. In order for the element earth to be experienced accordingly, the scaffolding should be placed in a sand or gravel pit. This allows you to excavate and transport sand to your heart's content, move loads back and forth and tilt them into pipes and bucket wheels. Since several children can play at the same time, the scaffolding promotes communication and cooperation as well as creativity and imagination.



Fundamental characteristics

- Child-oriented dimensions according to ergonomic knowledge
- Naturally shaped de-barked posts
- Appealing to the senses with its space-defining design
- High-quality design
- Numerous play offers
- Sturdy tongue and groove floor allows for large play space below the platform
- High play value with low space requirement
- Can be combined with other equipment
- Incentive for playing: sand hoists, sand wheel, chains
- Movement: physical exertion, climbing

Recommended for

- Kindergarten children
- School children
- Supervised play areas such as kindergartens, schools, after-school programmes or similar
- Public areas without supervision, such as playgrounds, parks or similar

Building Site 09



5.09001

A mechanical linkage system consisting of a rotating crank on the left, connected to a slider block that moves vertically along a guide. The slider block is also connected to a horizontal arm that pivots at its right end. The horizontal arm is connected to a vertical rod that passes through a fixed pivot point. The vertical rod is also connected to a horizontal rod that is pivoted at its left end to a fixed base. The horizontal rod is connected to a vertical rod that passes through a fixed pivot point. The vertical rod is also connected to a horizontal rod that is pivoted at its right end to a fixed base. The horizontal rod is connected to a vertical rod that passes through a fixed pivot point. The vertical rod is also connected to a horizontal rod that is pivoted at its right end to a fixed base.