



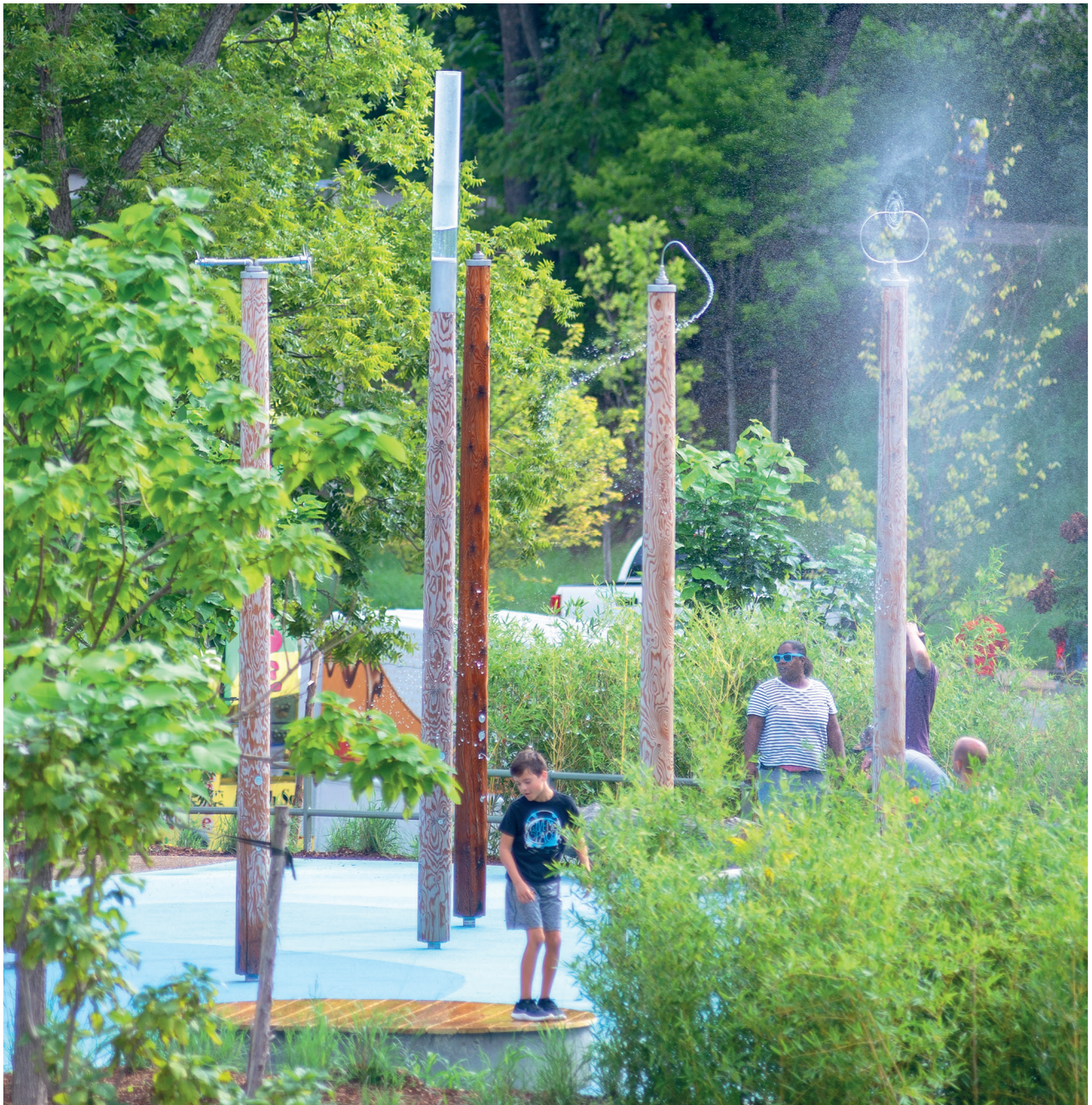
Forest Fountain

The Safety. The Quality. **The Original.**

Richter Spielgeräte GmbH

D-83112 Frasdorf · Phone +49(0)8052-17980 · www.richter-spielgeraete.de





The Gathering Place, Tulsa, USA, Photo © Daniel Perales



Special version coloured (masts made of stainless steel powder-coated, for an additional charge)

Forest Fountain

Water is one of the elements which children are particularly closely connected with. Playing with water in our Forest Fountain also has a special appeal to teenagers and adults. The fascination of players from observing the falling water cascades along with the change to get refreshed by their own efforts through pumping cannot be escaped. Our latest major projects in Tulsa/USA and Krasnodar/Russia also show the unique aesthetic effect of the Forest Fountain.



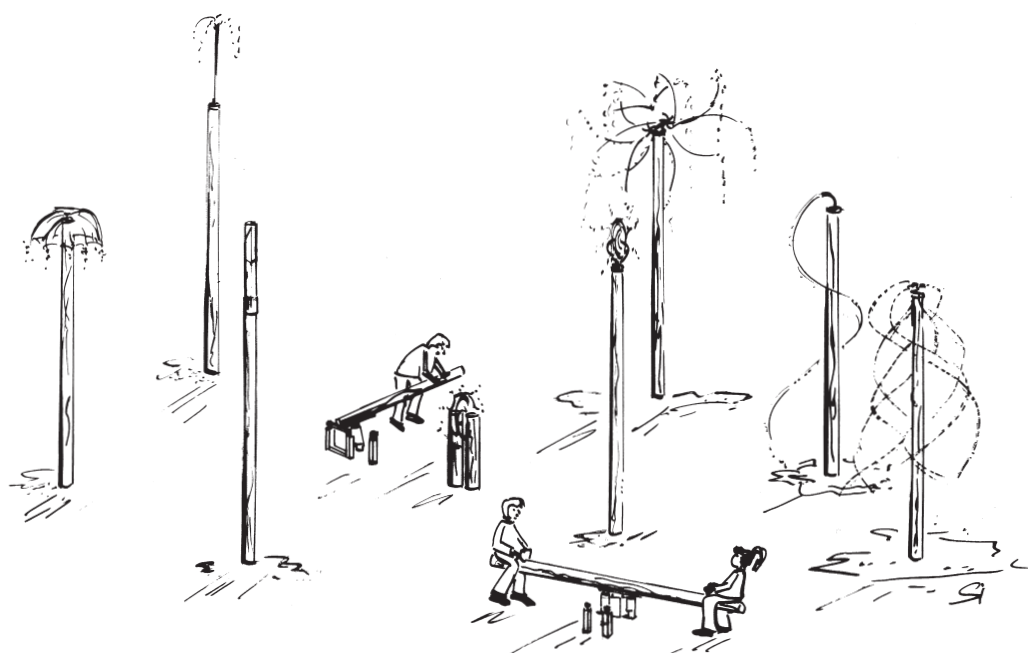
Photo © Daniel Perales



Sunvale Community Park, Melbourne, Australia, Photo © Tristan Filippone



Photo © Tristan Filippone





Order No. 5.27031 High Collision Disc



Order No. 5.27035 Horizontal Star Rotor



Order No. 5.27032 Vertical Jet



Order No.. 5.27034 Vertical Star Rotor

Rotors and jets

Low Collision Disc

Order No. 5.27030/5.27530

Spraying area 2 m, width 0.50 m

High Collision Disc

Order No. 5.27031/5.27531

Spraying area 4 m, width 1 m

Vertical Jet

Order No. 5.27032/5.27532

Spraying height up to 10 m, radius 2 m

Spiral Rotor

Order No. 5.27033/5.27533

Spraying area radius 2.5 m

Vertical Star Rotor

Order No. 5.27034/5.27534

Spraying area 14 m, width 1.50 m

Horizontal Star Rotor

Order No. 5.27035/5.27535

Spraying length Ø 10 m, radius 5 m

Umbrella Jet

Order No. 5.27036/5.27536

Spraying area radius 3 m

Reservoir

Order No. 5.27037/5.27537

Spraying area radius 2 m



5.27030/5.27530



5.27032/5.27532



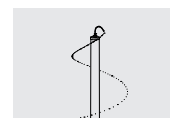
5.27034/5.27534



5.27036/5.27536



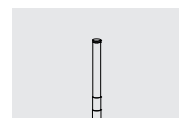
5.27031/5.27531



5.27033/5.27533



5.27035/5.27535



5.27037/5.27537



Water Playground Krasnodar, Russia, Photo © Iliya Varlamov

Components

Pumps

Long Handle Pump with valve system,
Order No. 5.27010/ 5.27015/ 5.27016

Long Handle Pump with water reservoir,
Order No. 5.27110/ 5.27115/ 5.27116

1 Pump cylinder with stainless steel mechanism on concrete well, Ø 110 cm, depth of installation approx. 60 cm, pump swipe of ash wood Ø 9 cm, length 2.30 m, weight approx. 900 kg, depending on type of distribution station (single or double), 3-way valve with pan bar handle and direction arrow, made of stainless steel/plastic, height 40 cm

Connection to main water max. 6 bar,
connection thread 1 inch inside, compression proof diameter 1 inch
Water requirement approx. 15l/min

Pump See-saw with valve system,
Order No. 5.27020/ 5.27025/ 5.27026

Pump See-saw with water reservoir,
Order No. 5.27120/ 5.27125/ 5.27126

2 Pump cylinders and stainless steel mechanism on concrete well, Ø 110 cm, depth of installation approx. 65 cm, see-saw beam of larch, length 4 m, optimized concealed bolt head, hand grips of stainless steel (glass bead blasted), fall height ≤ 1 m, weight approx. 950 kg, depending on type of distribution station (single or double), 3-way valve with pan bar handle and direction arrow, made of stainless steel/plastic, height 40 cm, connection to water as above
Water requirement approx. 20l/min

Masts

Order No. 5.27030 - 5.27037

Larch wood with steel foot, height approx. 4 m, 18/21 cm

Order No. 5.27530 - 5.27537

Cap of stainless steel or complete masts made of stainless steel tubes Ø 133 mm

Foundation 80 x 80 x 80 cm, excavation depth 110 cm, edges to be rounded if sand and gravel is used

Supply line between pump and mast, fabric hose 10 m and hose connector, included supply line to be laid in empty conduit such as drainpipe or flex pipe Ø 80 mm, not included in delivery supply line with 2 % gradient to pump concrete well for draining during period of frost



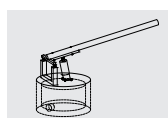
The Gathering Place, Tulsa, USA, Foto © Daniel Perales



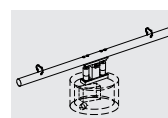
Photo © Daniel Perales



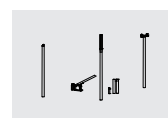
Photo © Daniel Perales



5.27010



5.27020



5.27001 - 5.27537